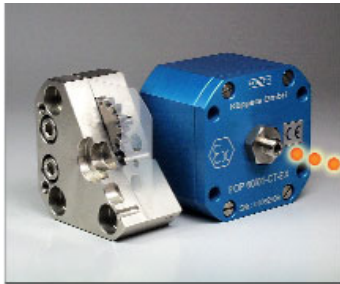


ZHM 01/* in Cartridge Design Gear PD Flow Meters for Paints, Wax and Adhesives



This ZHM series excels in numerous models for various applications: e. g., paint versions with flat seals and single-ended shafts for an ideal purging quality. In addition, versions with special bearings are available for critical paints.

As an option adapter plates can be supplied (see left picture below).

- The cartridge design of this follow-up model reduces the weight by another 50%. Therefore, the Cartridge-ZHM may be installed right behind the spray gun without adverse effects on the dynamic properties of the spray robot.
- The newly designed measuring kit provides a high resolution and allows for a precise measurement over a measuring range which would usually require two flow meters.



- The new flow meter can be completely purged within a few seconds and rapid colour changes are possible with no adverse effects on paints by residual sediments.
- The integral carrier-frequency pulse amplifier type VTE.CT or fibre-optic amplifier type FOP 60 allow for space-saving installation.

A legal protection of registered designs for the Cartridge-ZHM has been applied for.

Application

The cartridge ZHM is suitable to handle base paints, fillers, transparent and water-born coatings perfectly. It may also be used for wax and adhesives. The standard version has a carrier-frequency pulse amplifier which will precisely detect the r.p.m. of the gears. This happens without contact with the measuring medium and free of drag. The amplifier provides a digital output signal with a frequency directly proportional with the flow volume.

For applications in electrostatic spraying systems the fibre-optic amplifier FOP 60 is available.

The fibre-optic principle guarantees for an interference-free signal transmission. All pickups are available with IS-approval for use in hazardous areas.

Technical Data

Type	Measuring range*	K-factor	Linearity
ZHM 01/1	0.005 up to 2 ltr./min	26,500 pulses/ltr.	±0.7% of act. flow
	0.005 up to 1 ltr./min	26,500 pulses/ltr.	±0.5% of act. flow
ZHM 01/2	0.020 up to 3 ltr./min	14,000 pulses/ltr.	±0.5% of act. flow

*The measuring ranges are valid for viscosities from 30 mm²/s onwards.

operating pressure:	40 bar with flat seals, 400 bar with O-ring
connections:	bottom in- and outlet, dia 6 mm optionally: adapter plate lateral
threads G 1/4" or 1/8"	
materials:	stainless steel as per DIN 1.4305 (body) 1.4122 (gears) cf. AISI 303 or special materials 1.4571 (body) cf. AISI 316 Ti, 1.4122 (gears)
dimensions:	see drawing on page 3
weights:	ZHM 01/1: 400 g ZHM 01/2: 550 g
	for total weight add amplifier
	VTE-CT: 150 g
	FOP 60: 190 g
	VTER/P: 100 g
electrical data:	see separate datasheets on VTE-CT, FOP 60 and VTER/P

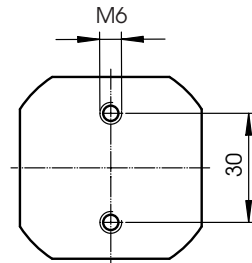
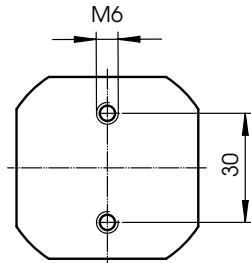
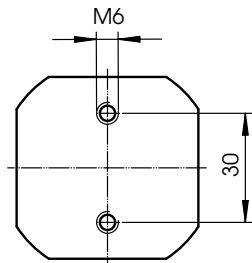
Dimensional Drawings (mm) lateralich in- and outlet G1/4"

ZHM 01/* with VTE.CT

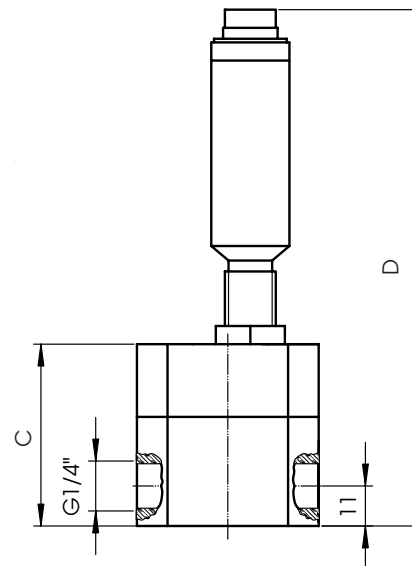
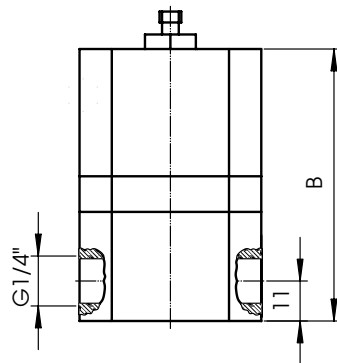
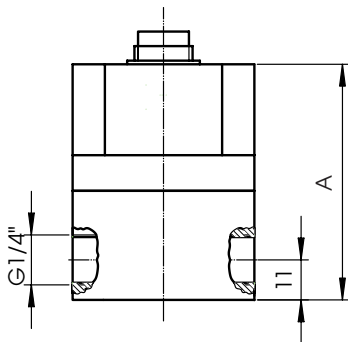
ZHM 01/* with FOP 60

ZHM 01/* with VTER/P

Bottom views

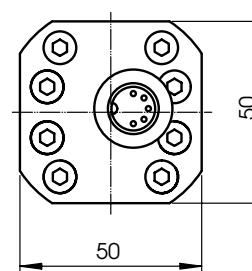
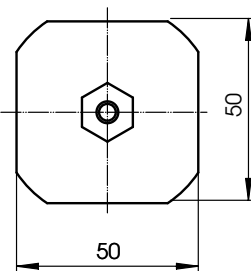
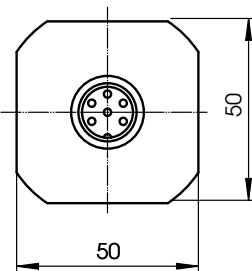


Side views



	A in mm	B in mm	C in mm	D in mm
ZHM01/*-CT	65	75	50	142

Top views



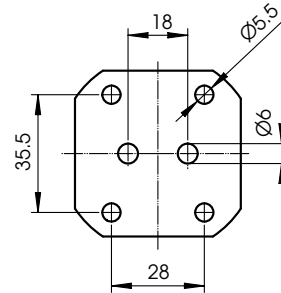
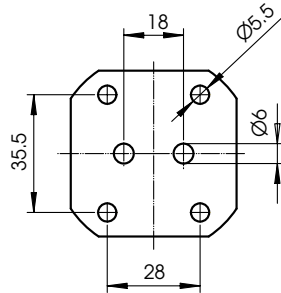
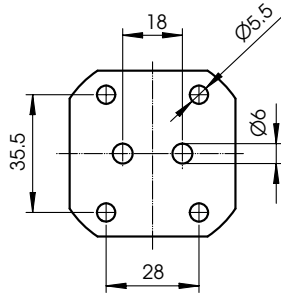
Dimensional Drawings (mm) bottom in- and outlet M6

ZHM 01/* with VTE.CT

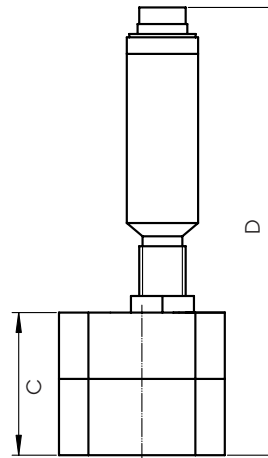
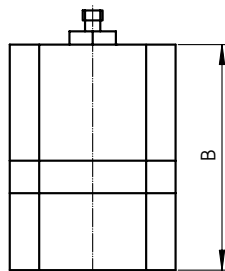
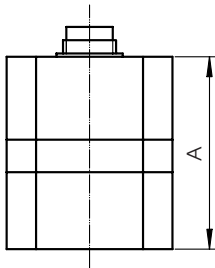
ZHM 01/* with FOP 60

ZHM 01/* with VTER/P

Bottom views

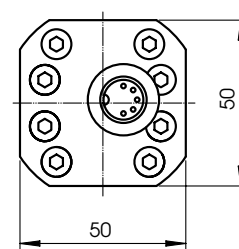
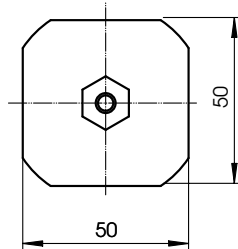
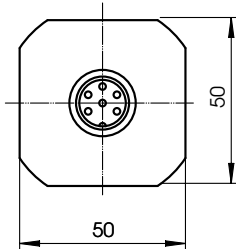


Side views



	A in mm	B in mm	C in mm	D in mm
ZHM01/1-CT	50	60	35	127
ZHM01/2-CT	58	68	43	135

Top views



Adapter plate (Option)

