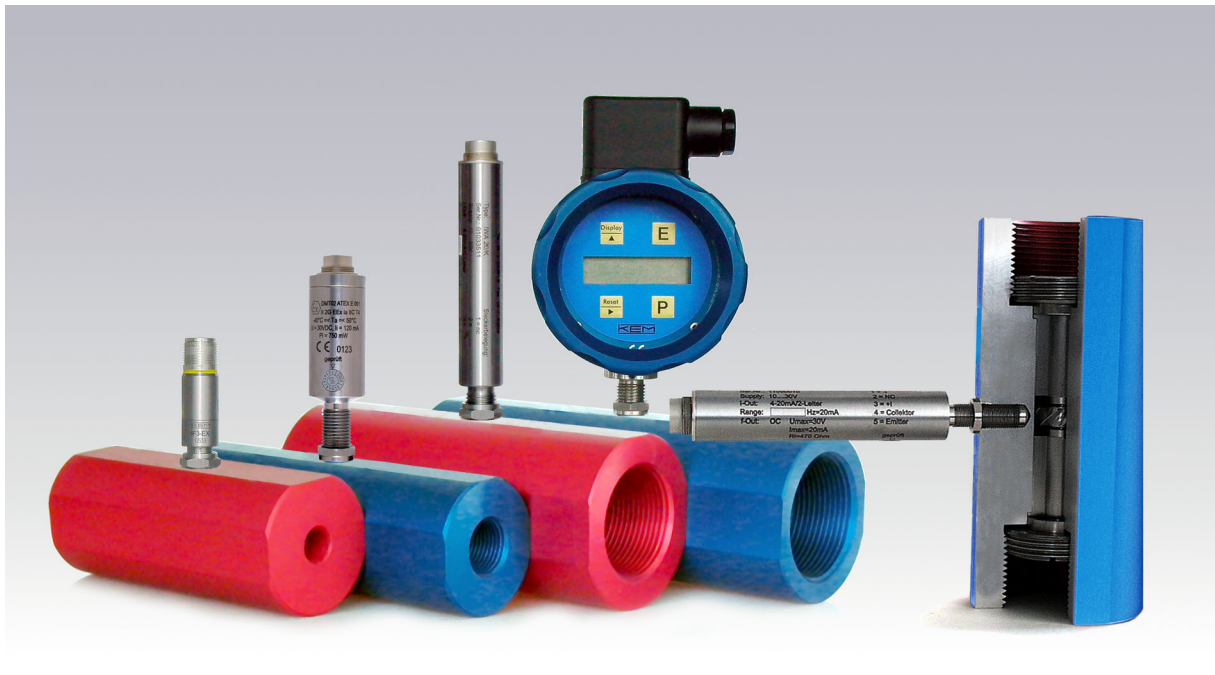


HM.../U* Turbine Flow Meters for Fluids

Turbine flow meters are suitable for the precise measurement of actual flow rates and totals of low-viscosity fluids. A pickup detects the r.p.m. of the turbine wheel and provides a flow proportional output signal.



Technical Data

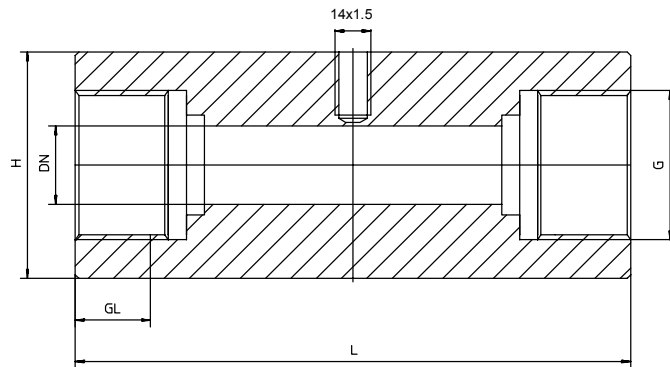
Type, dia	Meas. Range	Linearity	Pulses/ltr	Tmin./max.	max. Pressure
HM 007/U*	1.2–20 l/min	±1.5%	4,800	–20/+90 °C	400 bar
HM 011/U*	6–60 l/min	±1.5%	2,800	–20/+90 °C	400 bar
HM 022/U*	15–300 l/min	±1.5%	605	–20/+90 °C	400 bar
HM 030/U*	40–600 l/min	±1.5%	204	–20/+90 °C	315 bar

Linearity referring to actual flow rate

Materials

housing:	anodised aluminium (AlMgSiPb)
internals:	stainless steel as per DIN 1.4305 (SS303)
wheel:	stainless steel as per DIN 1.4122 (SS303)
bearings:	tungsten carbide slide bearings or ball bearings

Dimensions (mm)



Dia	SW	L	H	Thread G	GL max.	Ermeto-Adapter
7	46	117 mm	45 mm	G ¼"	12 mm	GE 12-PS/R ¼-ED
11	46	144 mm	48.5 mm	G ½"	14 mm	GE 16-PSR-ED/71
22	60	155 mm	63.5 mm	G 1 ¼"	21 mm	GE 30-PSR-ED/71
30	60	181 mm	63.5 mm	G 1 ½"	22 mm	GE 38-PSR-ED/71

Electrical Output and Evaluation

outputs available:

- voltage U_{ss} 0.5 to 500 mV (type IF 3)
- digital pulse output push pull (type VHEK.HM)
- 4 to 20 mA (type IWA 20)
- 4 to 20 mA, divider and local display (type VTM)

Separate datasheets available.

